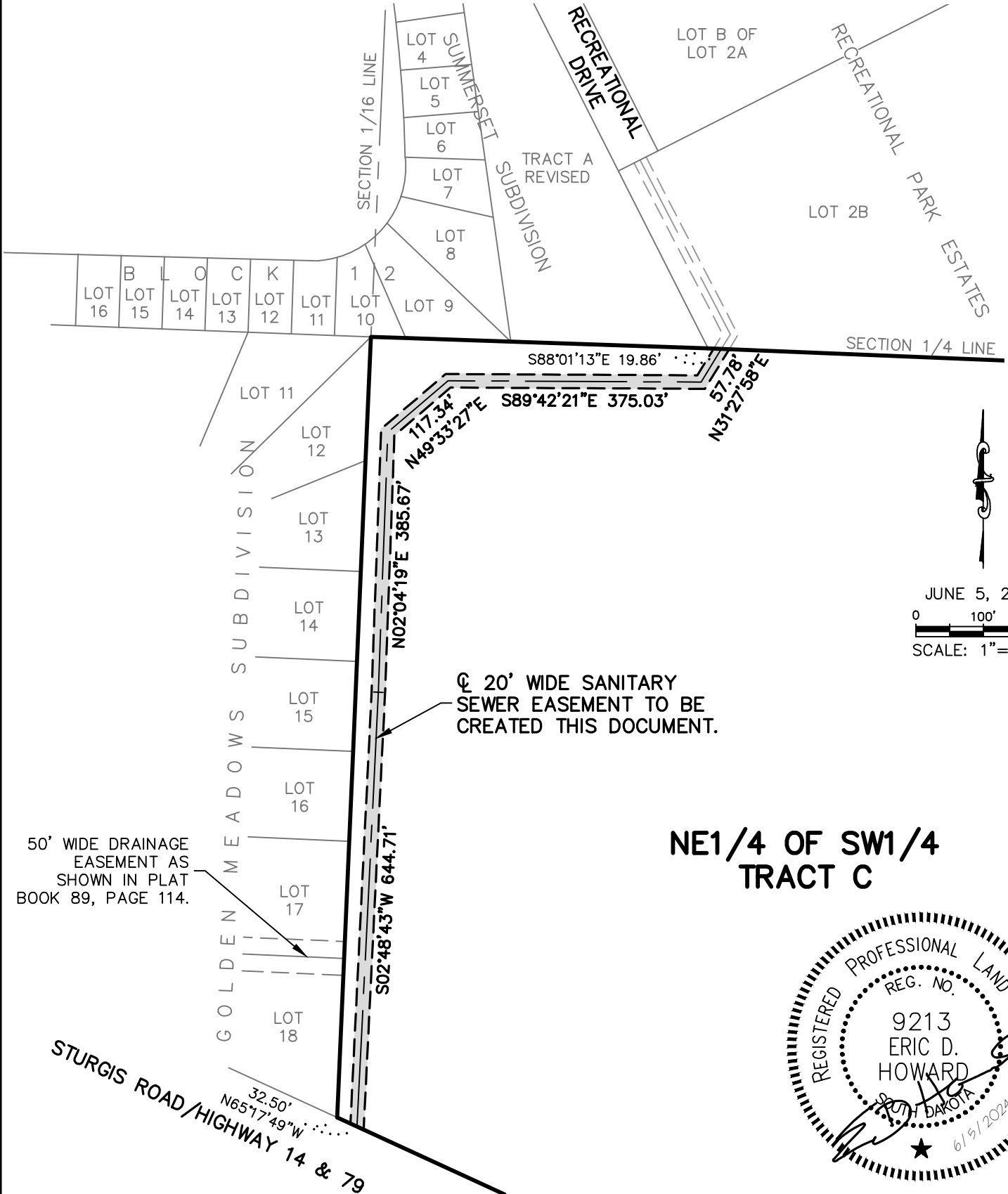


EXHIBIT 'A'
SANITARY SEWER EASEMENT
TRACT C OF LOT 3 OF NE1/4 OF SW1/4 OF SECTION 31, T3N, R7E, BHM,
CITY OF SUMMERSET, MEADE COUNTY, SOUTH DAKOTA

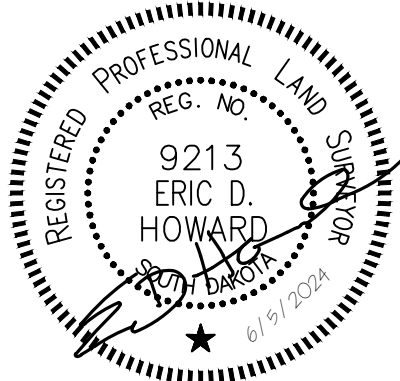


JUNE 5, 2024

SCALE: 1" = 200'

☉ 20' WIDE SANITARY SEWER EASEMENT TO BE CREATED THIS DOCUMENT.

NE1/4 OF SW1/4 TRACT C



50' WIDE DRAINAGE EASEMENT AS SHOWN IN PLAT BOOK 89, PAGE 114.

S:\2493.02 Norman Ranch Sanitary Force Main Drawings\EXHIBIT\2493.02 SANSEW EASE-NE, SW, TRACT C.dwg, 6/5/2024 8:16:36 AM